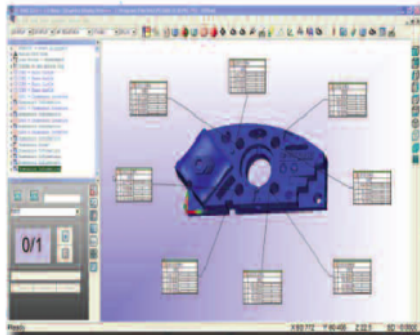




*We are dedicated to providing high-end CNC machining and CMM verification for the Aerospace and Defence sectors*

## Brown & Sharpe Coordinate Measurement Machine



Our verification and measurement capability includes a **Brown & Sharpe Global Performance 7.10.7 Coordinate Measurement Machine** housed in a temperature controlled environment.

Direct importation of CAD data allows the component verification according to the original data.

### **MACHINE SPECIFICATIONS:**

- X Axis = 700mm
- Y Axis = 1000mm
- Z Axis = 660mm
- FB2 Global® Control System
- Temperature Compensation
- PC-DMIS CAD++ Software

PC-DMIS CAD++ software enables us to measure the most complex parts with unsurpassed speed and accuracy, and provides full control over a range of probing applications.

Along with all the capabilities of PC-DMIS PRO and PC-DMIS CAD, PC-DMIS CAD++ lets us quickly define probe paths and extract nominal values and vectors.

PC-DMIS CAD++ enables us to easily configure and produce reports that conform to company specifications.



### **FOR MORE INFORMATION:**

Phone: (02) 6760 3773  
Email: [enquiries@andromedaindustries.com.au](mailto:enquiries@andromedaindustries.com.au)  
Website: [www.andromedaindustries.com.au](http://www.andromedaindustries.com.au)